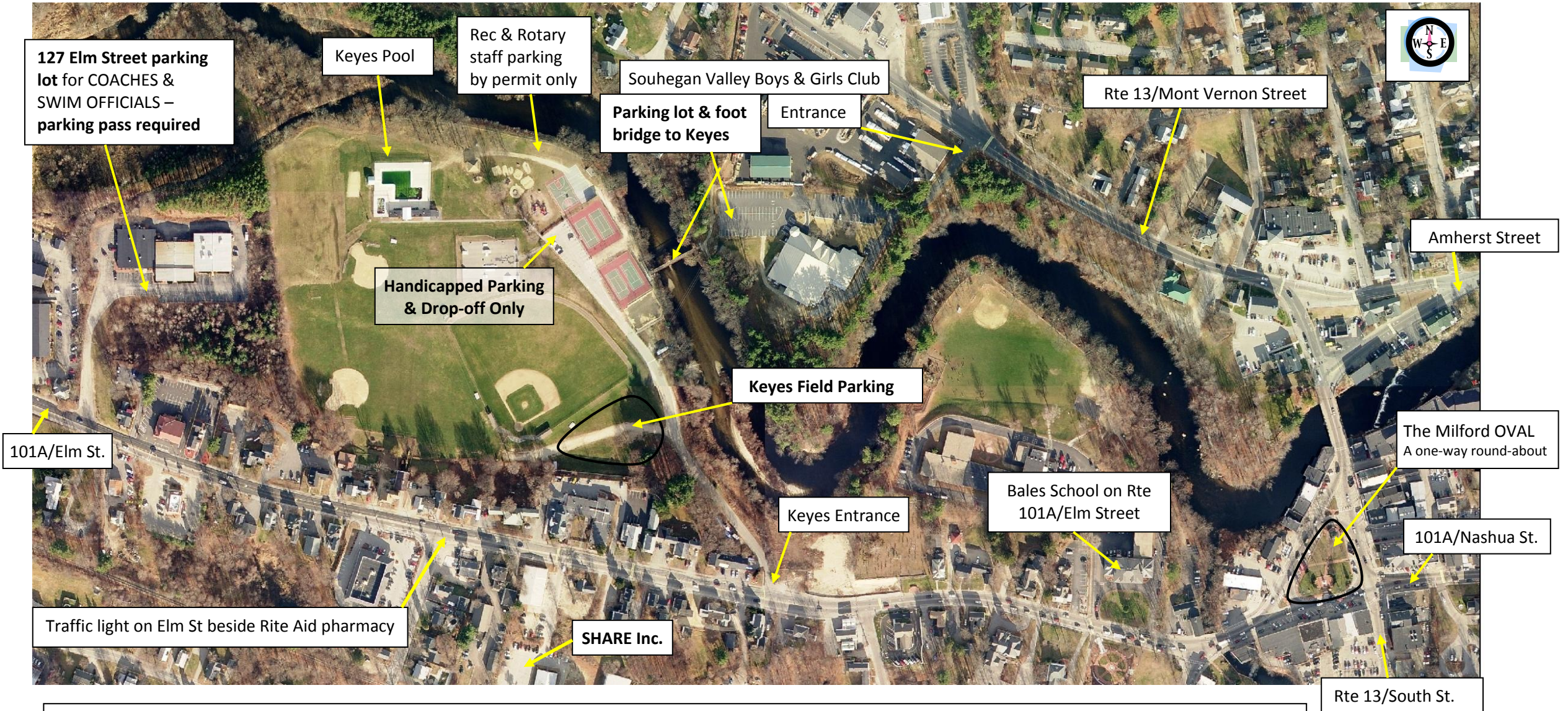


**Parking and Location Map for the 43<sup>rd</sup> Annual Milford Rotary Swim Meet (July 16 & 17, 2011) at Keyes Memorial Park 45 Elm St Milford NH**



**Please remember that we are being allowed to use *private property* for parking and the owners will be conducting their regular business on Sat & Sun.**

**Keyes Field Parking (south of ball diamond)** – Main parking area for the swim event. Handicapped spaces available by the tennis courts.

**127 Elm Parking** – Reserved for Coaches and Officials; must have a **parking pass** displayed in windshield; the driveway into and around the building and the emergency entrance to Keyes **MUST** be kept open so no parking in these areas. We need to leave two spaces open at the doorway to Units A-1 and A-2.

**B&G Club Parking** – Please park towards the back of the lot, closest to the footbridge, especially on Sunday as we will be sharing parking with Sunday church services.

**SHARE Inc. Parking** – Back-up parking lot if the other 3 lots fill-up; located on the south side of Elm St. behind Robbins Auto Parts; sign reads SHARE Center.